

INTRODUCING... OUR NEW RESORT SUITES



SUMMER 2022



RESORT SUITES

PHASE 1 > RELEASE 1

TOTAL RESORT SUITES - **50**

1-Bedroom - **6**

1-Bedroom w/Lockout - **0**

2-Bedrooms - **2**

2-Bedrooms w/Lockout - **42**

PHASE 1 RELEASE - **20**

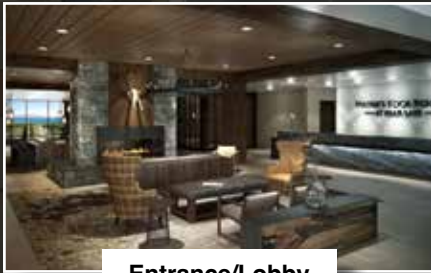
1-Bedroom - **3**

1-Bedroom w/Lockout - **0**

2-Bedrooms - **1**

2-Bedrooms w/Lockout - **16**





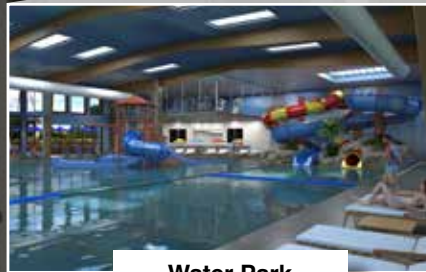
Entrance/Lobby

RESORT SUITES

INDOOR
WATER PARK



Outdoor Patio



Water Park

PRIVATE BEACH

INTRODUCING... OUR NEW
RESORT SUITES









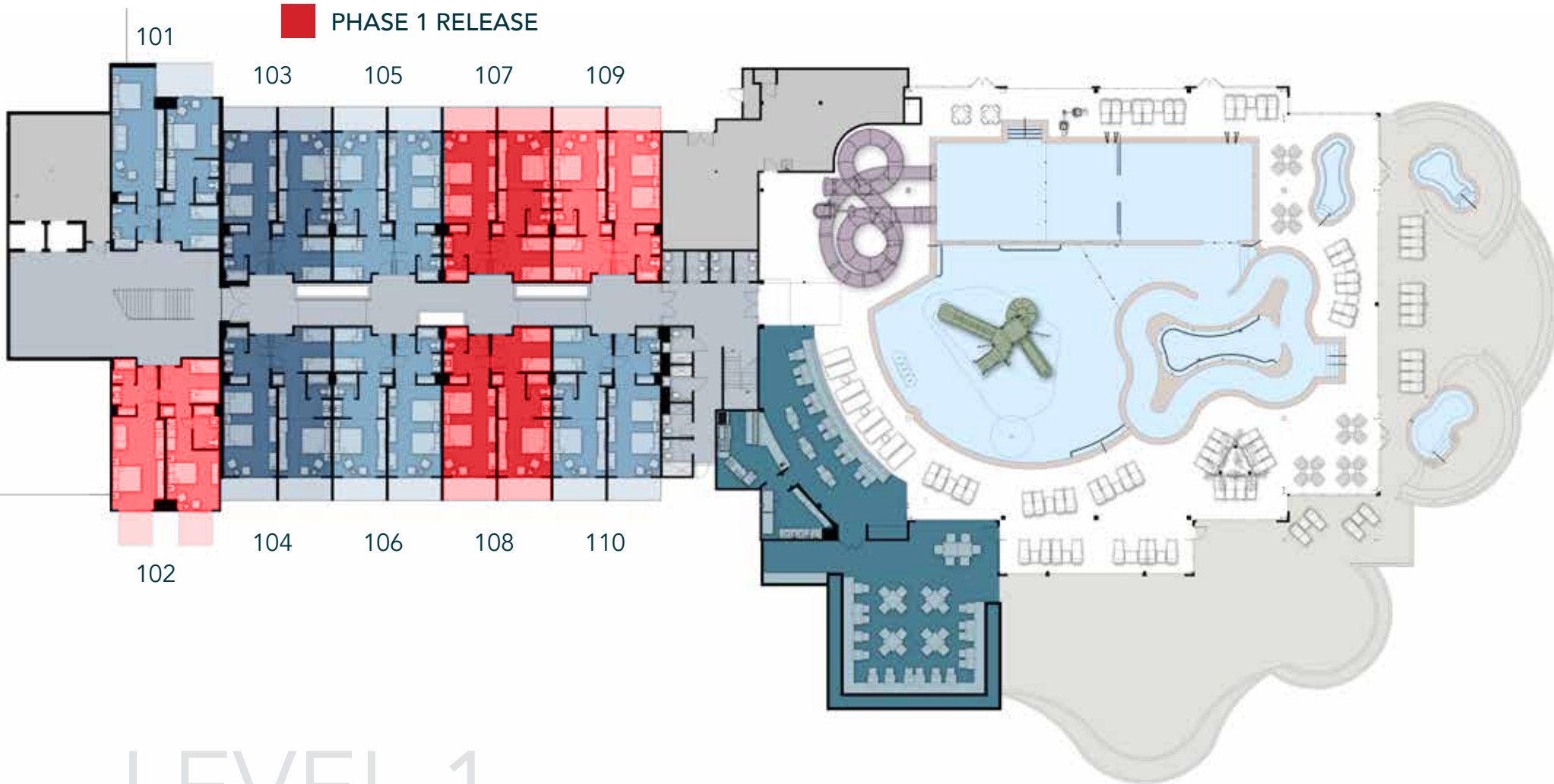


NORTH ELEVATION

LAWN LEVEL

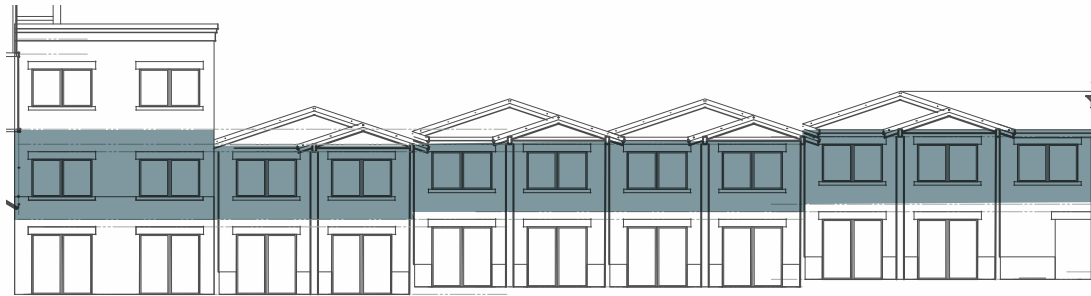


 PHASE 1 RELEASE

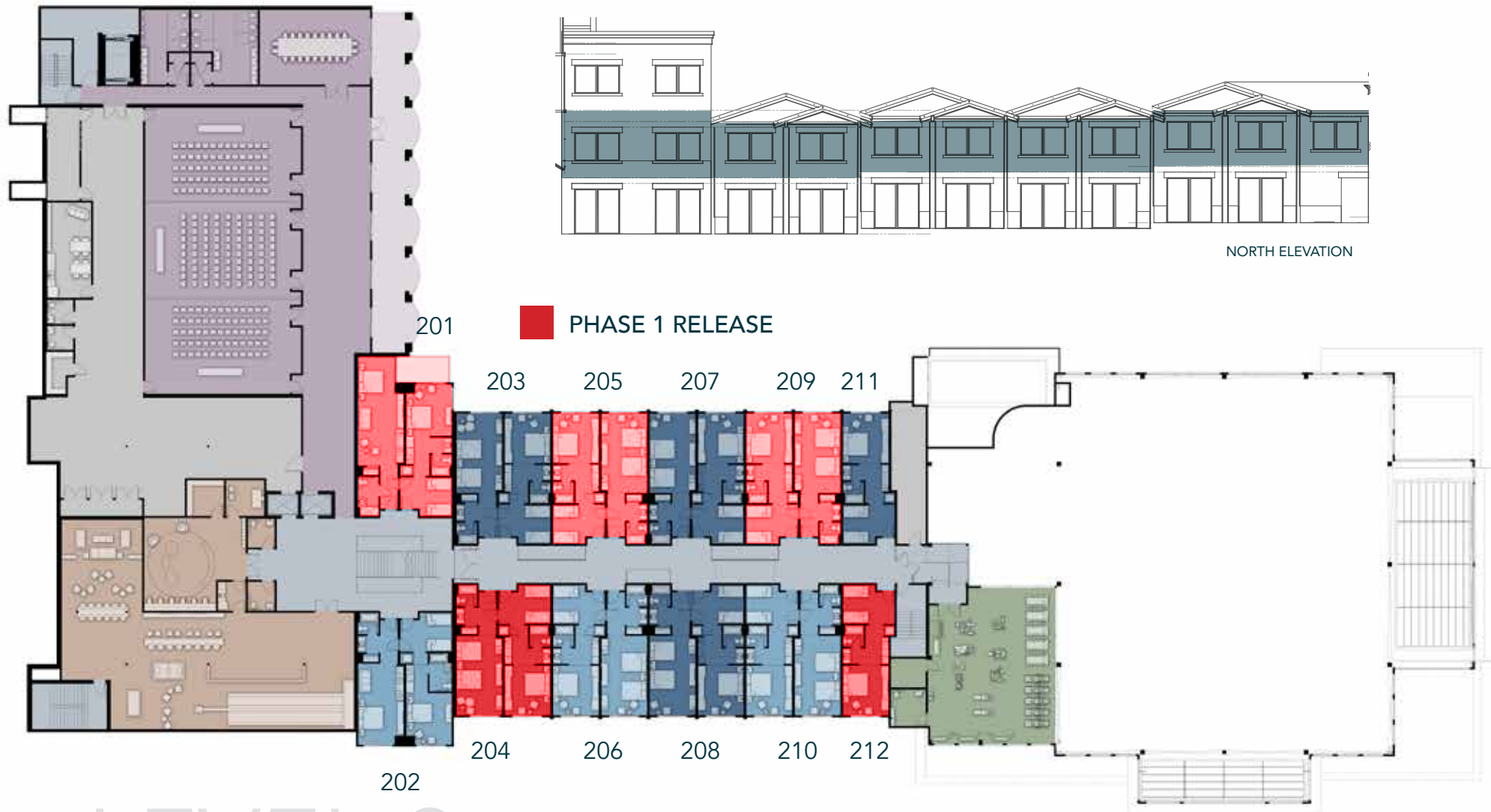


LEVEL 1

AMENITIES LEVEL



NORTH ELEVATION



LEVEL 2

LOBBY LEVEL



NORTH ELEVATION

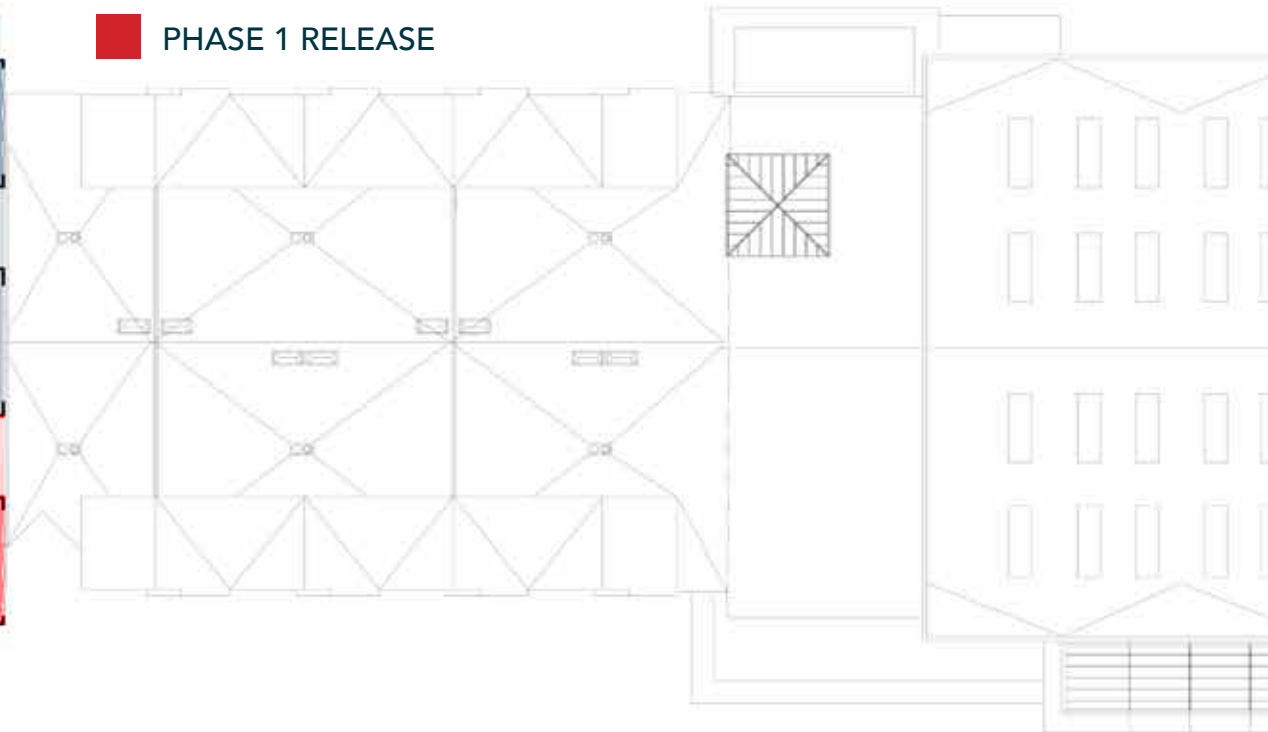
 PHASE 1 RELEASE



301

302

LEVEL 3

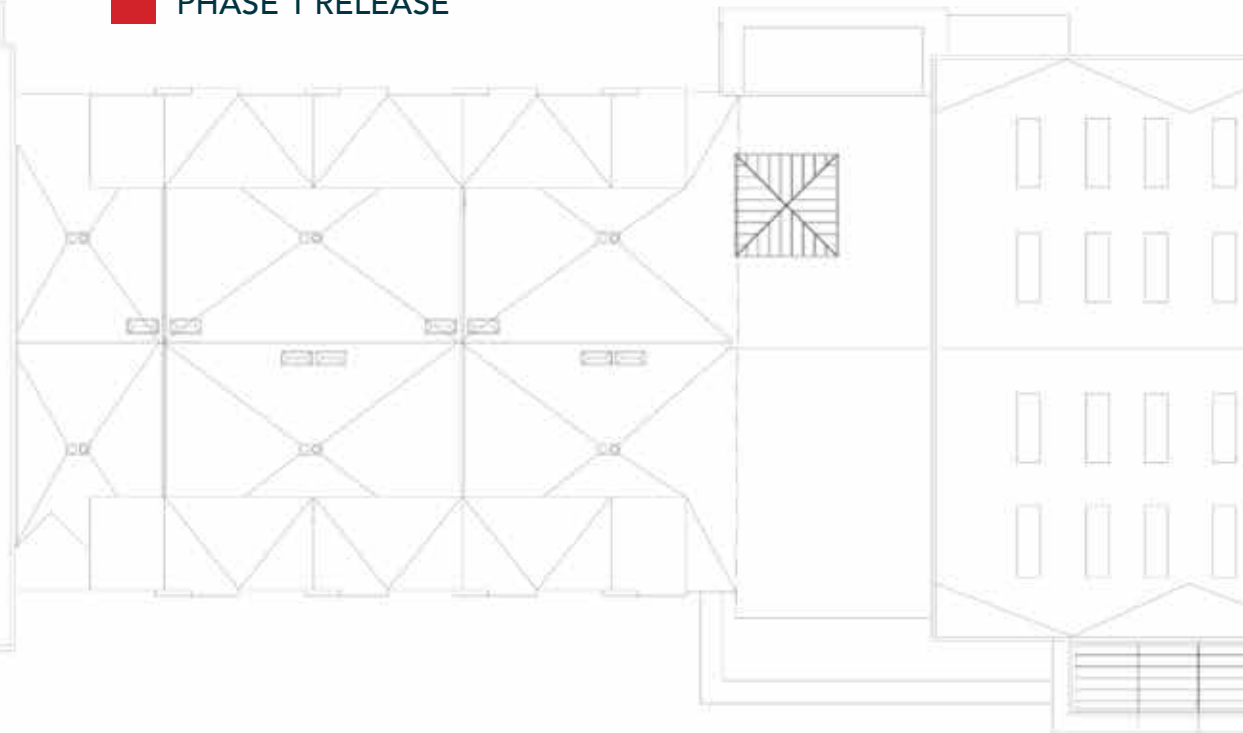


GRANDVIEW LEVEL



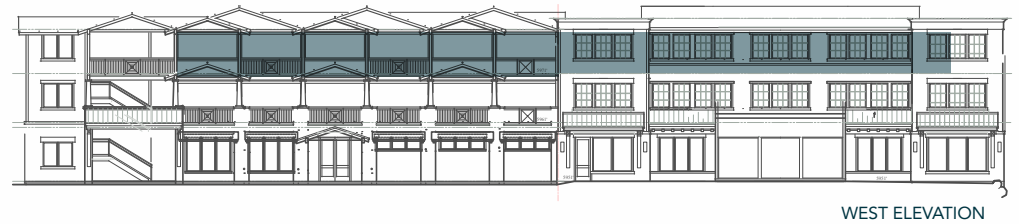
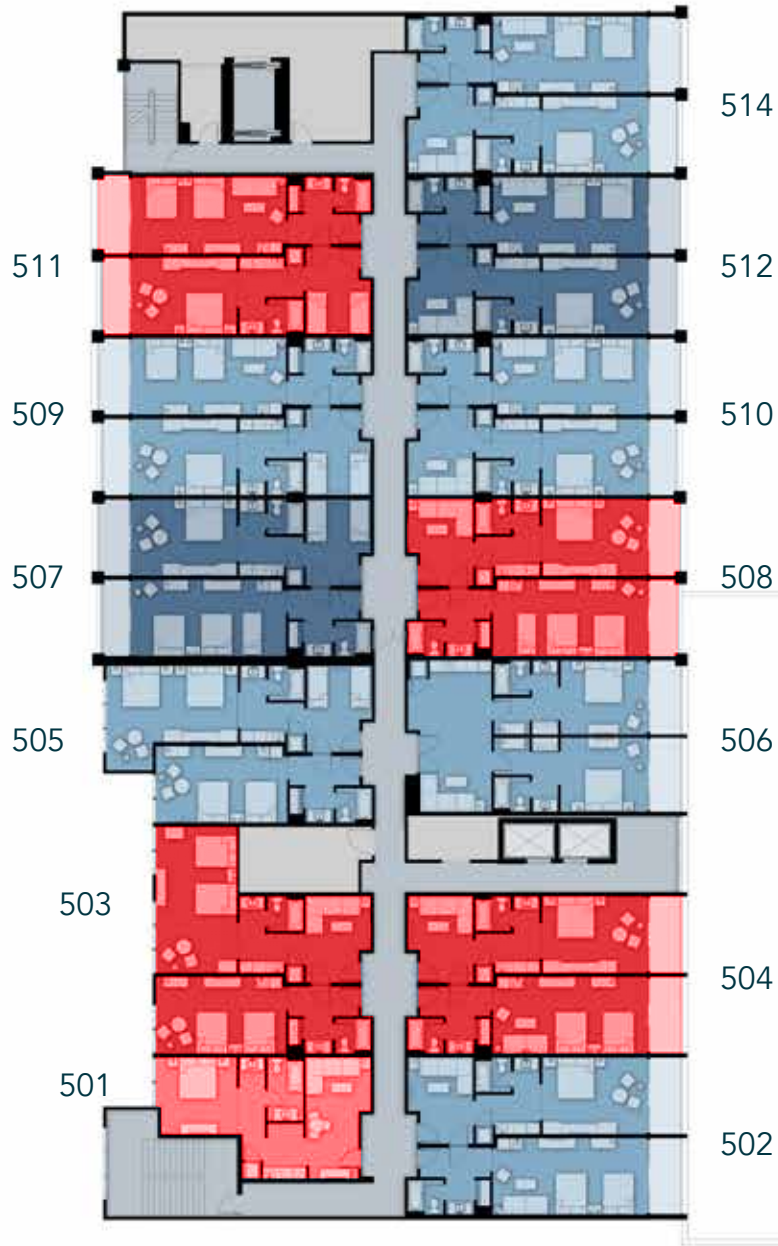
WEST ELEVATION

 PHASE 1 RELEASE



LEVEL 4

PENTHOUSE LEVEL



 PHASE 1 RELEASE



LEVEL 5

| | SUITE # | ROOM TYPE | SQ. FT. | BEDS | BATHS | EXTERIOR | VIEW | PRICE |
|---------------|---------|-----------|---------|------|-------|----------|-------|-----------|
| LAWN LEVEL | 102 | LO/ADA | 880 | 2 | 2 | Patio | North | \$562,000 |
| | 107 | Lock-Off | 868 | 2 | 2 | Patio | South | \$545,000 |
| | 108 | Lock-Off | 868 | 2 | 2 | Patio | North | \$545,000 |
| | 109 | Lock-Off | 868 | 2 | 2 | Patio | South | \$571,000 |

| | | | | | | | | |
|--------------------|-----|----------|-----|---|---|---|-------|------------|
| AMENITIES LEVEL | 201 | LO/ADA | 954 | 2 | 2 | - | South | \$617,000 |
| | 204 | Lock-Off | 868 | 2 | 2 | - | North | \$535,000 |
| | 205 | Lock-Off | 868 | 2 | 2 | - | South | \$ 551,000 |
| | 209 | Lock-Off | 868 | 2 | 2 | - | South | \$551,000 |
| | 212 | Studio | 445 | 1 | 1 | - | North | \$360,000 |

| | | | | | | | | |
|-------|-----|-------|-----|---|-----|---------|------|-----------|
| LOBBY | 302 | Suite | 934 | 1 | 1.5 | Balcony | Lake | \$575,000 |
|-------|-----|-------|-----|---|-----|---------|------|-----------|

| | | | | | | | | |
|--------------------|-----|-----------|-------|---|---|---------|----------|------------|
| GRANDVIEW LEVEL | 402 | Lock-Off | 956 | 2 | 1 | Balcony | Lake | \$ 607,000 |
| | 404 | Lock-Off | 956 | 2 | 2 | Balcony | Lake | \$589,000 |
| | 405 | LO/ADA | 1,010 | 2 | 2 | - | Mountain | \$581,000 |
| | 406 | Suite/ADA | 950 | 2 | 2 | Balcony | Lake | \$564,000 |
| | 411 | Lock-Off | 956 | 2 | 2 | Balcony | Mountain | \$595,000 |

| | | | | | | | | |
|--------------------|-----|----------|-------|---|---|---------|----------|-----------|
| PENTHOUSE LEVEL | 501 | Suite | 558 | 1 | 1 | - | Mountain | \$388,000 |
| | 503 | Lock-Off | 1,009 | 2 | 2 | - | Mountain | \$640,000 |
| | 504 | Lock-Off | 956 | 2 | 2 | Balcony | Lake | \$599,900 |
| | 508 | Lock-Off | 956 | 2 | 2 | Balcony | Lake | \$599,900 |
| | 511 | Lock-Off | 956 | 2 | 2 | Balcony | Mountain | \$589,000 |



VISIT US ONLINE AT
watersedgebearlake.com/ownership

WATER'S EDGE RESORT SALES TEAM

JILL HOWELL

Water's Edge Resort Sales Advisor

+1 208 713-1993

jill.howell@evrealestate.com

KRECHELLE HYMAS

Water's Edge Resort Sales Advisor

+1 801 369-7864

krechelle.hymas@evrealestate.com

KERI CLUNE

Water's Edge Resort Sales Advisor

+1 208 440-9996

kari.clune@evrealestate.com



ENGEL & VÖLKERS®

Engel & Volkers Salt Lake 1987 South 1100 East Salt Lake City, UT 84106