

# lake residences interior finishes

---



WATER'S EDGE RESORT  
— AT BEAR LAKE —

home owner's association



## table of contents

3 | flooring schedule

4 | interior finishes

5 | plumbing fixtures

6 | appliances

7 | lighting

8 | main living furniture package

9 | bedroom furniture package

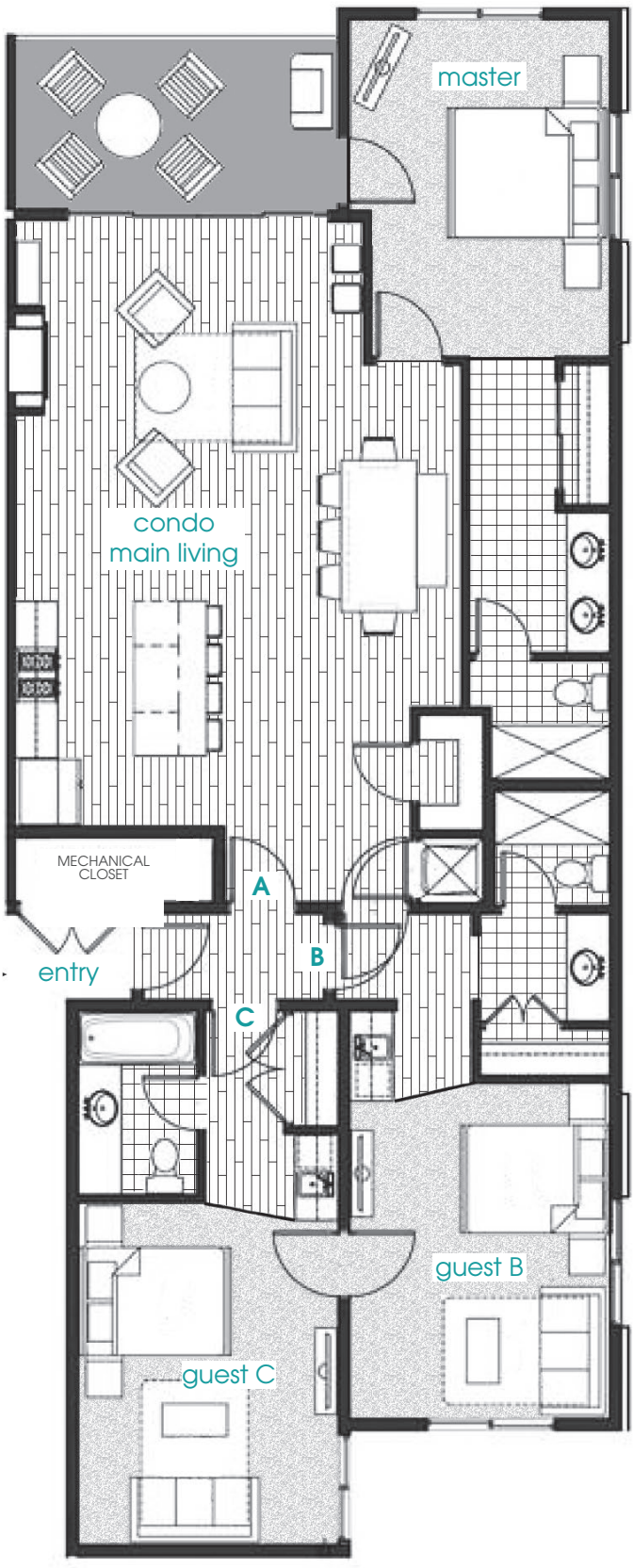
10 | kitchen & bath supplies

11 | furniture & fixtures



\* All renderings and illustrative maps on all the following pages in this document are artist's conceptual renderings only and subject to change without notice. The developer reserves the right to make any modifications and changes as deemed necessary. The condominiums sizes, specifications, proposed interior finishes, and layouts are approximate only and subject to change without notice. Amenities shown in renderings are proposed. The developer reserves the right to make any modifications and changes as deemed necessary. Prices are subject to change without notice. Errors and omissions excepted. Unauthorized use of the images, artist renderings, plans or other depictions of the development is strictly prohibited.

# flooring schedule



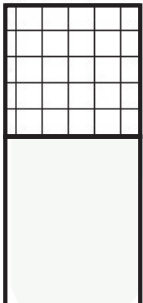
flooring



carpet

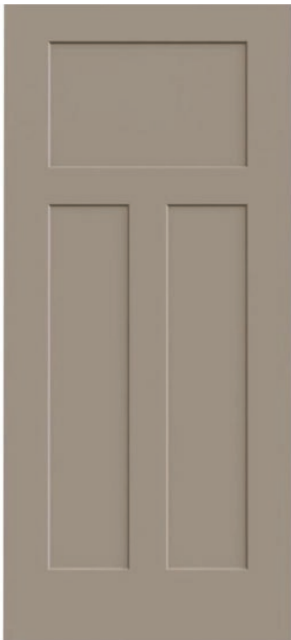


LVT



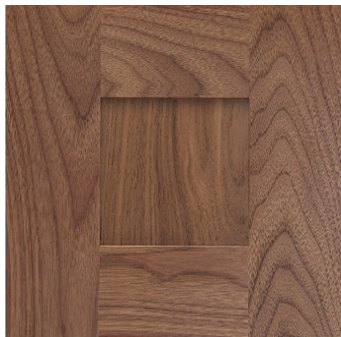
tile

# interior finishes

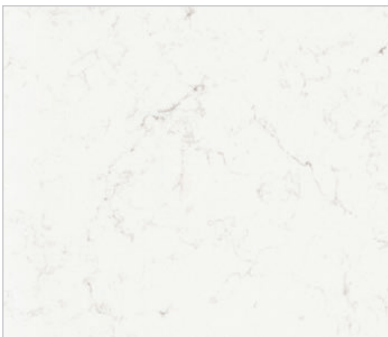


doors & levers

hardware



cabinets



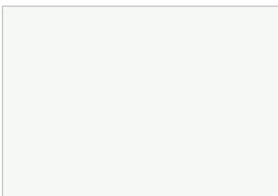
counter tops



backsplash



bathroom surfaces



bathroom & shower surfaces



bathroom tile

# plumbing fixtures

## KITCHEN



kitchen sink & faucet



guest B & C sink & faucet

## BATH



master & guest B bath shower fixtures



vanity sinks & faucets



toilet



guest C cast iron tub & fixtures



# appliances

## MAIN KITCHEN



**KitchenAid®**  
french door refrigerator  
with bottom freezer



**KitchenAid®**  
microwave



**KitchenAid®**  
smooth top  
electric range



**SAMSUNG**  
main stacked  
washer & dryer



**KitchenAid®**  
ultra-quiet  
dishwasher

## GUEST B & C



**LG**  
stainless steel  
microwave



**GE**  
mini-fridge

# lighting

## MAIN LIVING & MASTER



## GUEST B & C



## main living furniture package



# bedroom furniture package

## MASTER



## GUEST B & C



# kitchen & bath supplies

## KITCHEN

complete set of cooking & kitchen utensils  
(spatulas, serving spoon & fork, etc.)  
full matching set of flatware, dishes, and  
glassware  
knife block set (paring, carving, slicing)  
wine bottle opener  
can opener  
cookware set  
pasta pan and colander  
steak knives  
serving platter  
pizza cutter  
cookie sheets  
coffee maker

mixing bowl set  
paper towel holder  
toaster  
cutting boards  
ice cream scoop  
potholders and hot pads  
dish cloths and towels  
wastebasket  
fire extinguisher  
salt & pepper shakers  
dining table with chairs and bench  
bar stools  
vacuum cleaner  
propane bbq grill

## BATH

fabric shower curtain and mildew resistant liner  
with rod and rings (1) or glass shower door (2)  
mirror  
wastebasket  
adequate lighting  
towel rack  
toilet paper holder

bath linens  
bath mat - one per bath/shower  
bath towels - 12  
face towels - 6  
hand towels - 6  
makeup remover towels - 3  
bath rugs - 3



# furniture & fixtures

## BEDROOMS

mattress & bed frame  
bed linens  
king or queen sheet set with duvet  
1 x number of beds  
mattress protectors  
1 x number of beds  
blankets – 1 extra per bed  
pillows with pillow protectors  
king beds (4), queen beds & sofas (2)  
flat screen smartv with remotes & satellite TV  
chest of drawers  
window treatments

wastebaskets  
clothing hangers  
alarm clock/charging station  
digital safe  
bedside tables with lamps  
telephone  
floor lamps  
bedroom art  
mirrors  
decorative bed pillows & bed scarves  
accent tables & accent chair

## MAIN LIVING

area rugs  
welcome mat  
plants and small artwork  
entryway art and mirror  
sofa sleeper and sofa pillows  
flat screen smartv with remotes & satellite TV

accent chairs  
ottoman and ottoman tray  
floor lamps and table lamps  
décor  
patio table and chairs





Water's Edge Resort At Bear Lake  
88 South Bear Lake Boulevard  
Garden City, Utah 84028  
[info@watersedgebearlake.com](mailto:info@watersedgebearlake.com)

[WatersEdgeBearLake.com](http://WatersEdgeBearLake.com)